



THE LONDONER
LEICESTER SQ.

The Gallery Floorplan

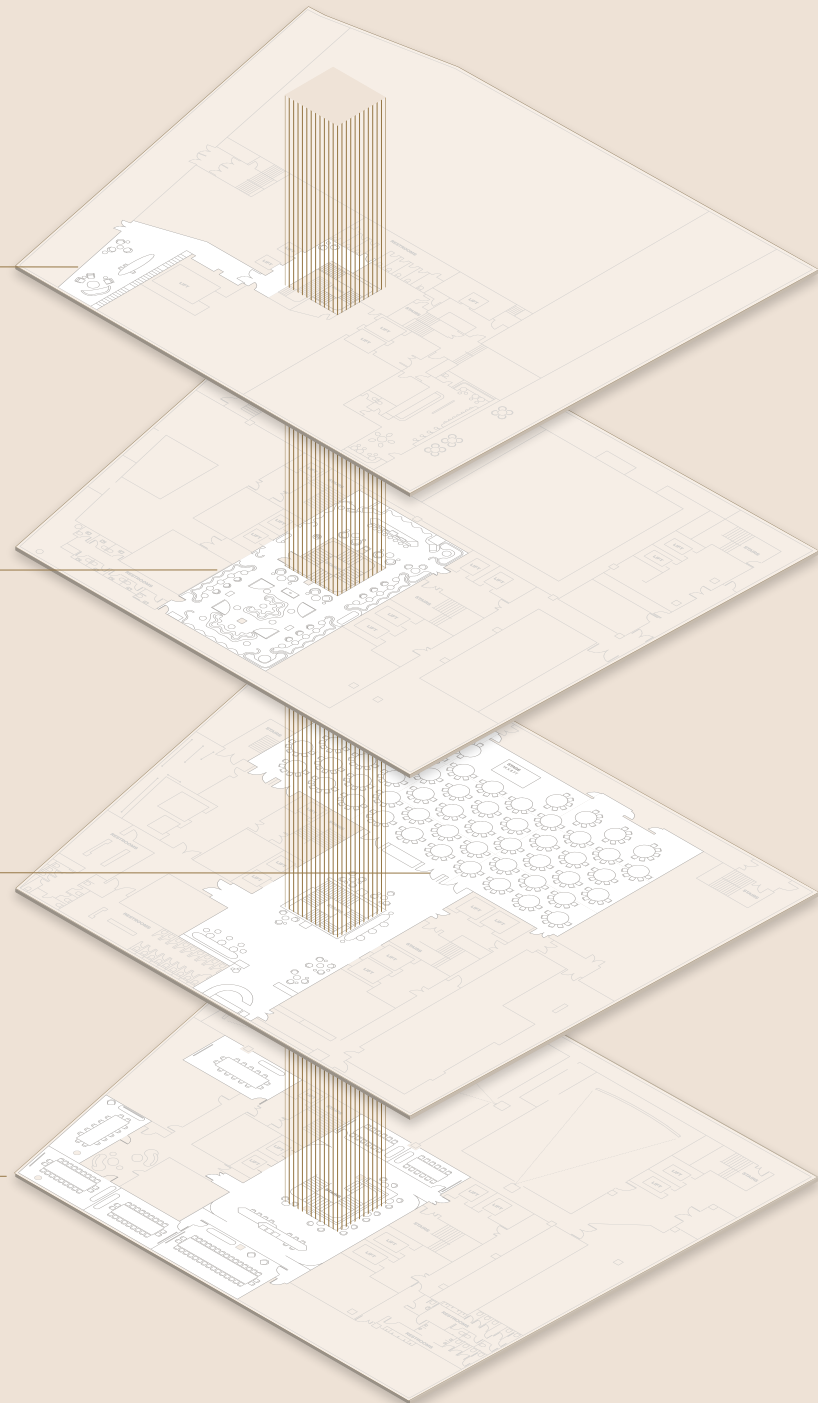
THE SPACES AT A GLANCE

50 WHITCOMB'S
GFL

THE GREEN ROOM
B1

THE BALLROOM
B2

THE GALLERY
B3



THE GALLERY

CAPACITIES

	Theatre	Classroom	Boardroom	U-shape	Cabaret	Lunch/Dinner	Reception
The National Gallery	20	9	8	-	-	8	15
Somerset House	20	9	8	-	-	8	15
The National Gallery + Somerset House	48	21	-	27	-	16	30
Royal Academy of Arts	64	36	24	28	24	36	60
Tate Britain	30	24	20	20	16	24	38
Hayward Gallery	34	21	20	16	16	24	38
Tate Britain + Hayward Gallery	82	56	40	44	32	48	76
Serpentine Gallery	-	-	16	-	-	-	-
Maddox Gallery	-	-	16	-	-	-	-

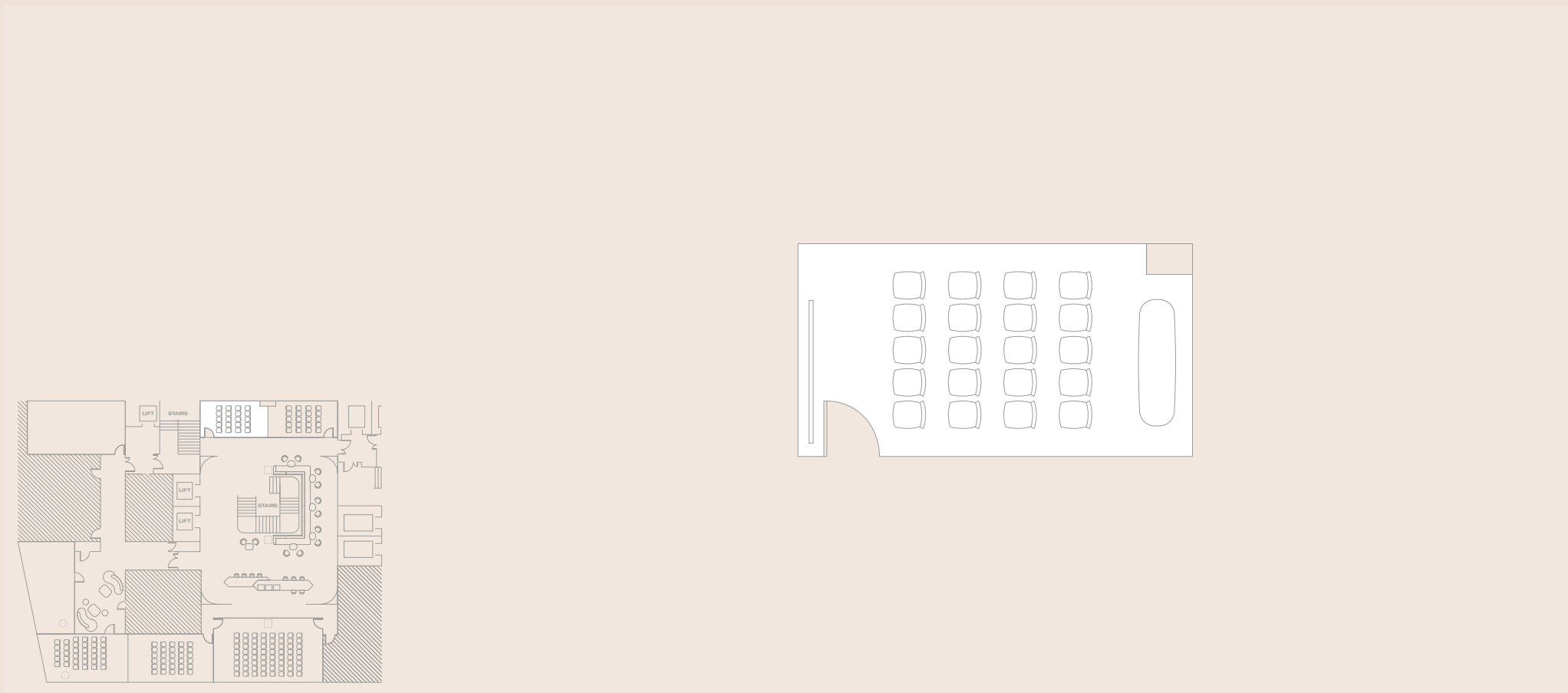
DIMENSIONS

	Area		Length		Width		Height	
	sq. m	sq. ft	m	ft	m	ft	m	ft
The National Gallery	20	215	6.2	20' 4"	3.2	10' 6"	3.5	11' 6"
Somerset House	20	215	6.4	21'	3.2	10' 6"	3.5	11' 6"
The National Gallery + Somerset House	40	431	12.6	41' 4"	3.2	10' 6"	3.5	11' 6"
Royal Academy of Arts	54	581	9.9	32' 6"	5.8	19'	3.5	11' 6"
Tate Britain	34	366	7.9	25' 11"	4.2	13' 9"	3.5	11' 6"
Hayward Gallery	34	366	7.9	25' 11"	4.2	13' 9"	3.5	11' 6"
Tate Britain + Hayward Gallery	68	732	15.8	51' 10"	4.2	13' 9"	3.5	11' 6"
Serpentine Gallery	35	377	8.4	27' 7"	4.3	14' 1"	3.5	11' 6"
Maddox Gallery	39	420	8.9	29' 2"	4.6	15' 1"	3.5	11' 6"

BREAKOUT AREAS

	Standing	sq.m	sq.ft	Length		Width		Height	
				m	ft	m	ft	m	ft
Gallery Foyer	171	162	1,744	16. 8	55'	12.4	40' 6"	3.5	11' 5"
Gallery	275	256	2,756	25.8	84' 5"	12.4	40' 6"	-	-

THEATRE

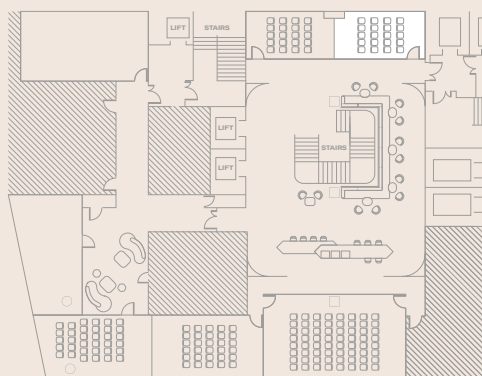


THE NATIONAL GALLERY

20 capacity

For more room layouts tailored to your event,
please email events@thelondoner.com

THEATRE

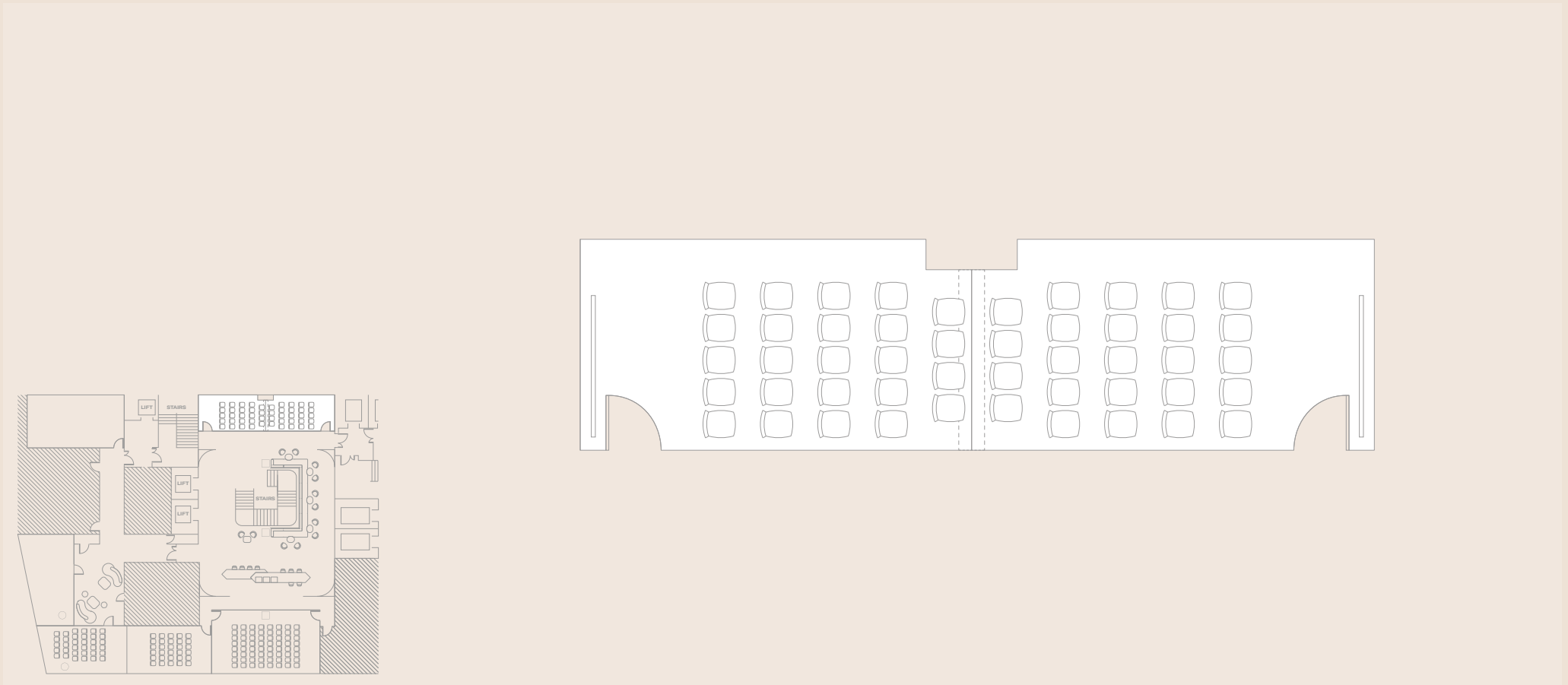


THE NATIONAL GALLERY

20 capacity

For more room layouts tailored to your event,
please email events@thelondoner.com

THEATRE

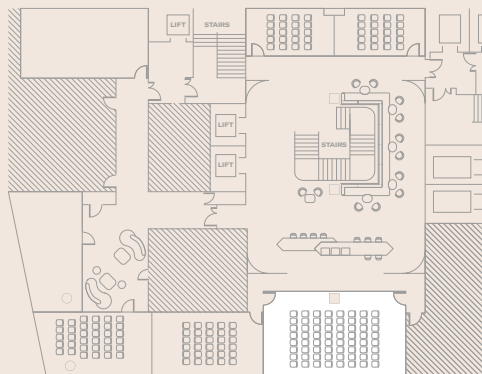
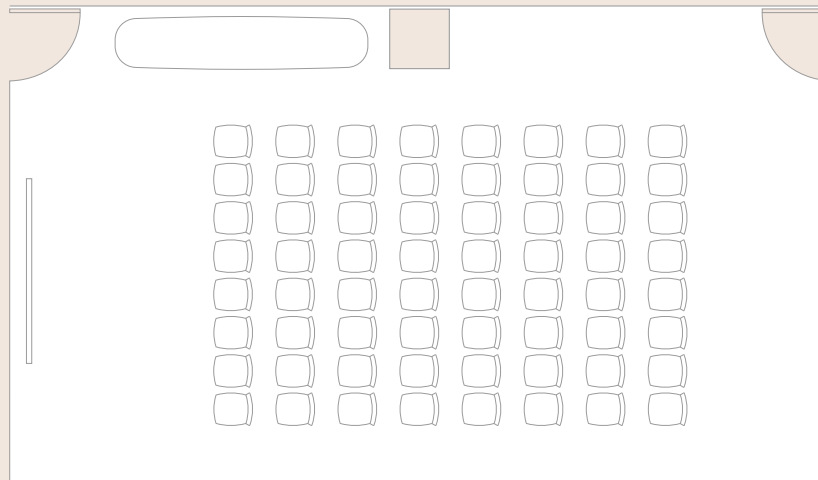


THE NATIONAL GALLERY
AND SOMERSET HOUSE

48 capacity

For more room layouts tailored to your event,
please email events@thelondoner.com

THEATRE

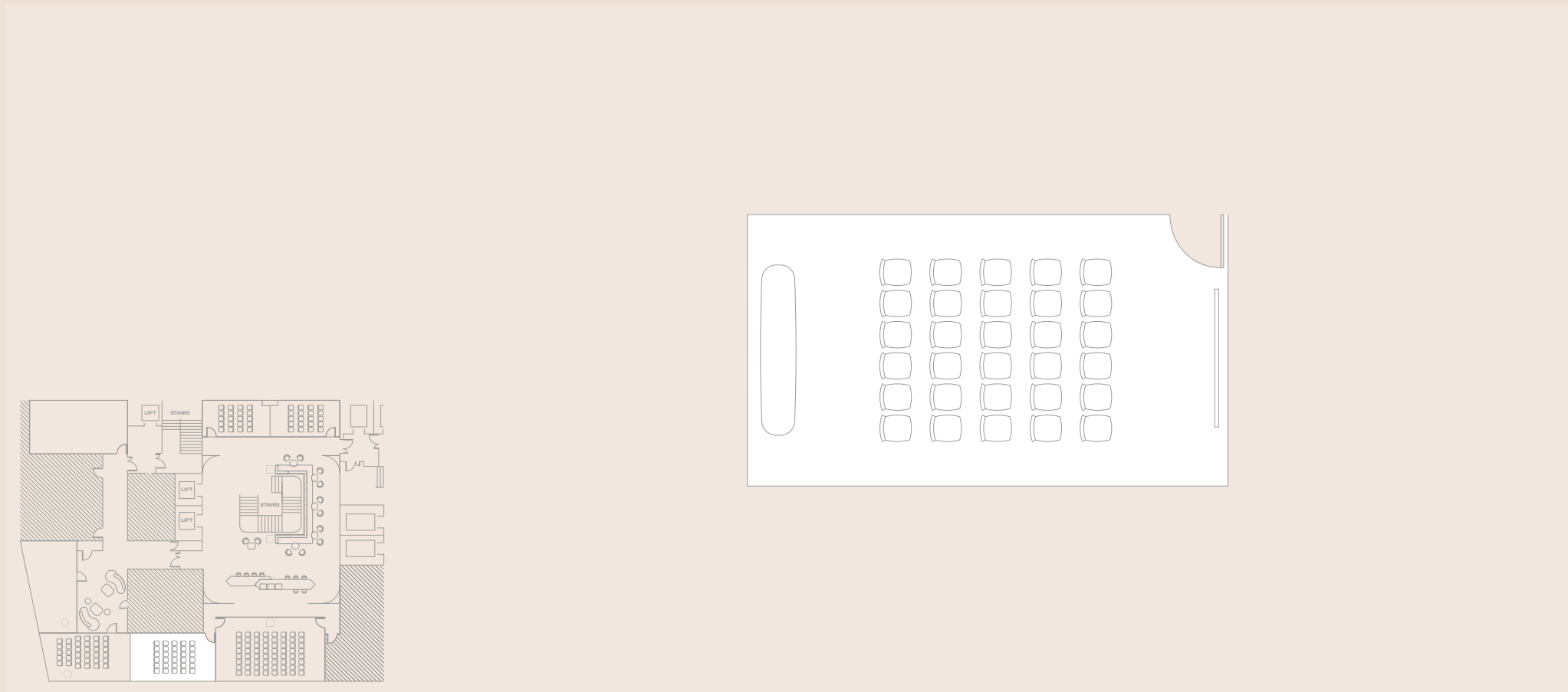


ROYAL ACADEMY OF ARTS

64 capacity

For more room layouts tailored to your event,
please email events@thelondoner.com

THEATRE

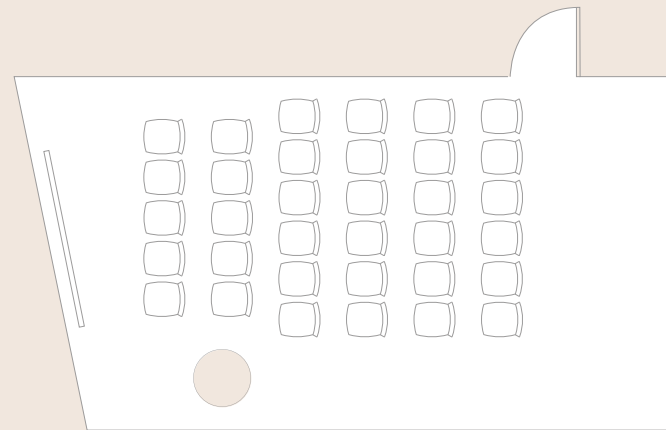
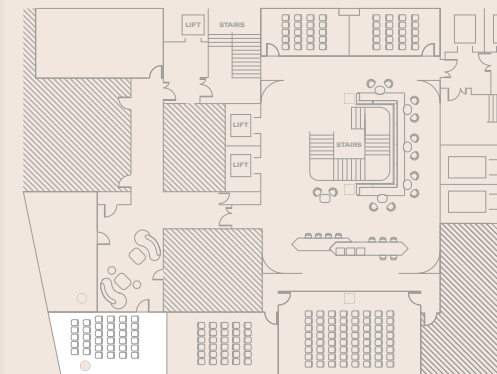


TATE BRITAIN

30 capacity

For more room layouts tailored to your event,
please email events@thelondoner.com

THEATRE

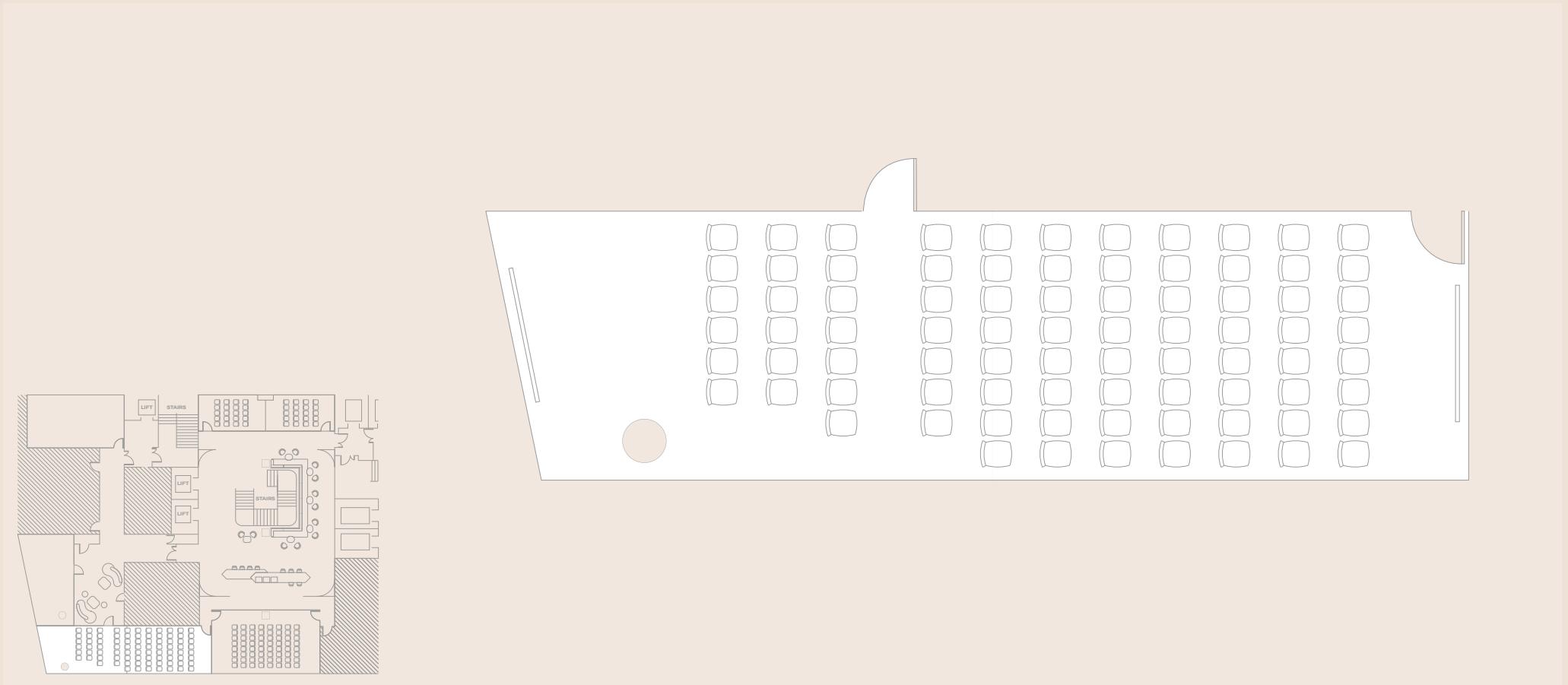


HAYWARD GALLERY

34 capacity

For more room layouts tailored to your event,
please email events@thelondoner.com

THEATRE

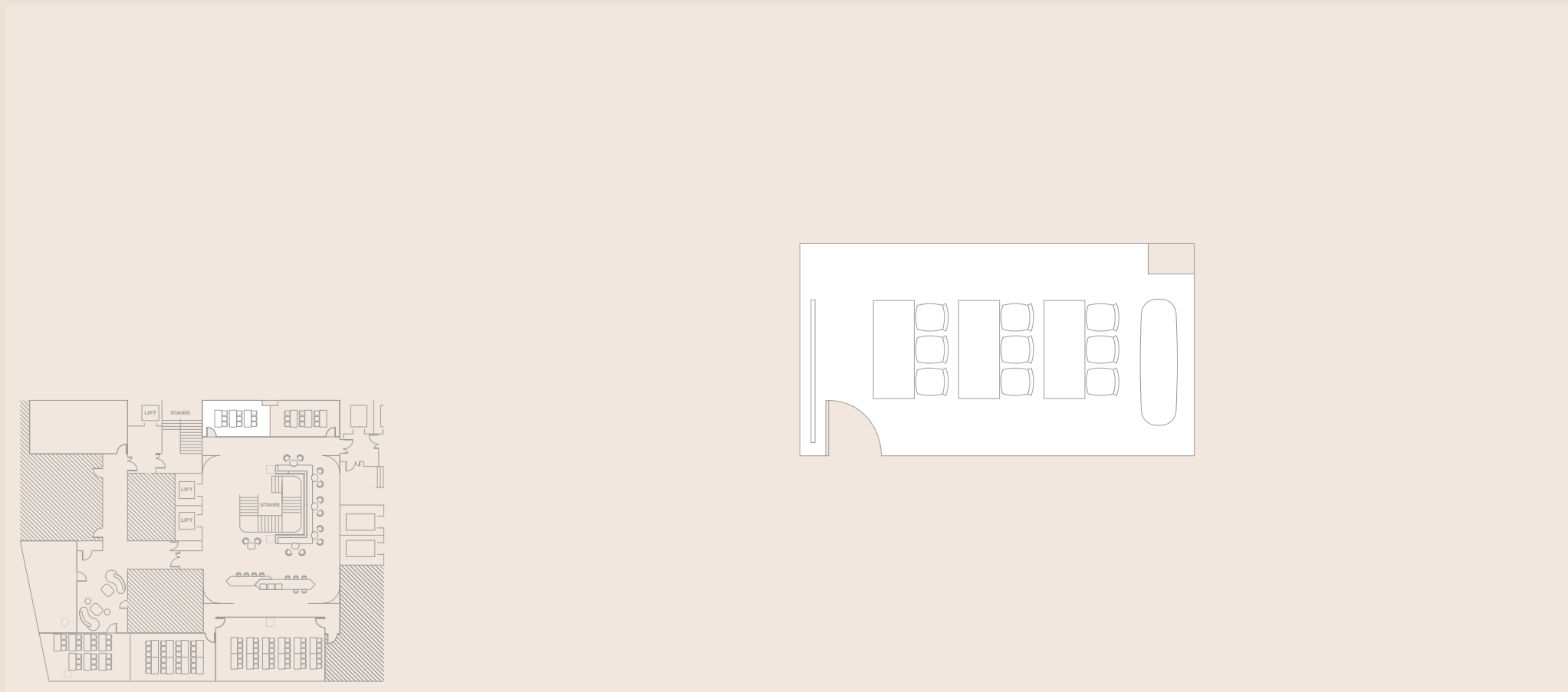


TATE BRITAIN AND
HAYWARD GALLERY

82 capacity

For more room layouts tailored to your event,
please email events@thelondoner.com

CLASSROOM

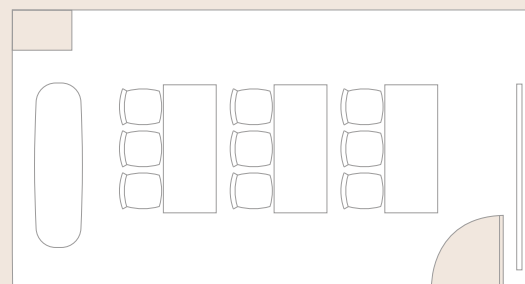
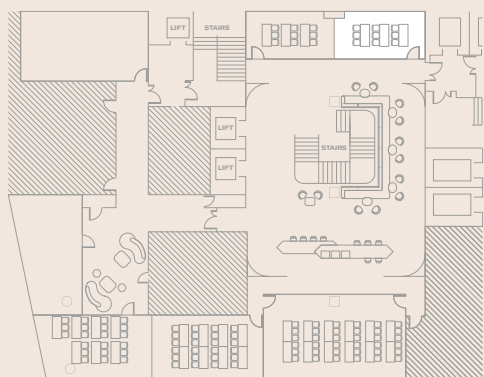


THE NATIONAL GALLERY

3 tables
9 capacity at 3 guests per table

For more room layouts tailored to your event,
please email events@thelondoner.com

CLASSROOM

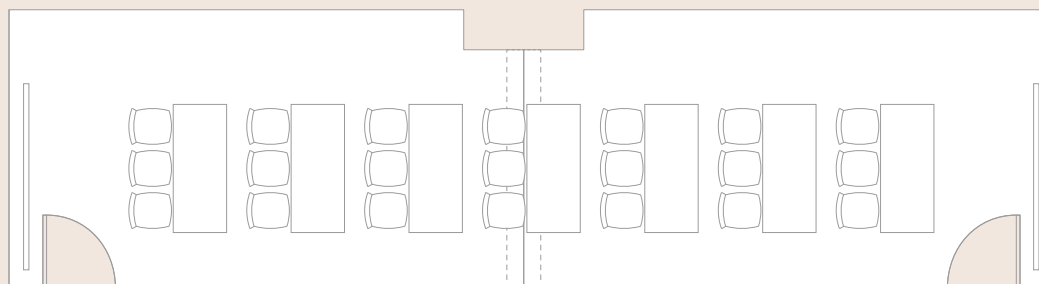
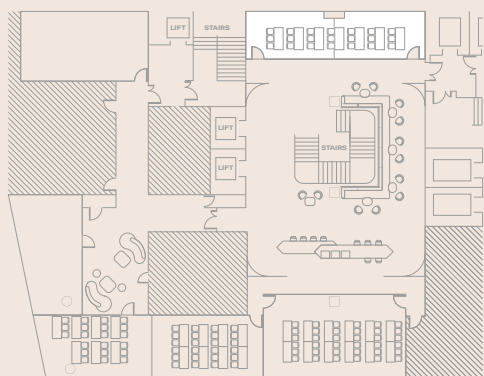


THE NATIONAL GALLERY

3 tables
9 capacity at 3 guests per table

For more room layouts tailored to your event,
please email events@thelondoner.com

CLASSROOM

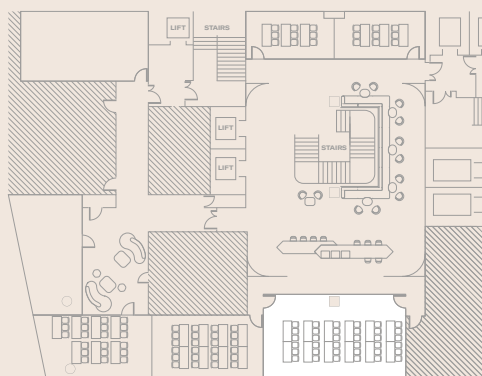
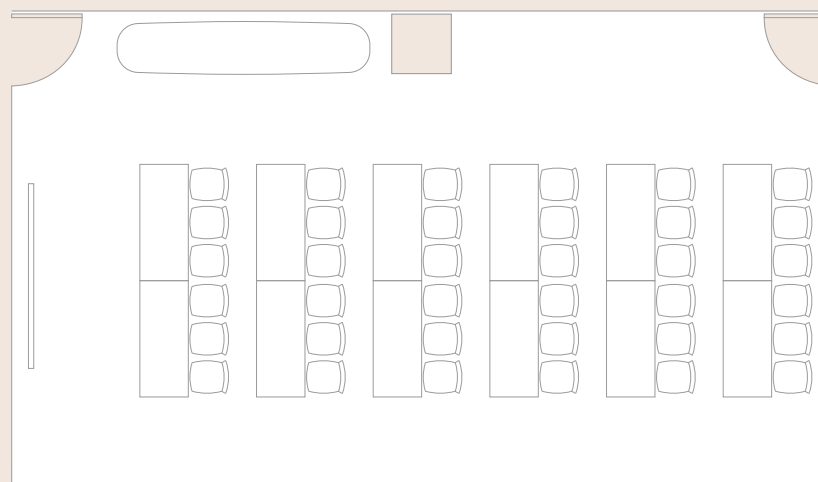


**THE NATIONAL GALLERY
AND SOMERSET HOUSE**

7 tables
21 capacity at 3 guests per table

For more room layouts tailored to your event,
please email events@thelondoner.com

CLASSROOM

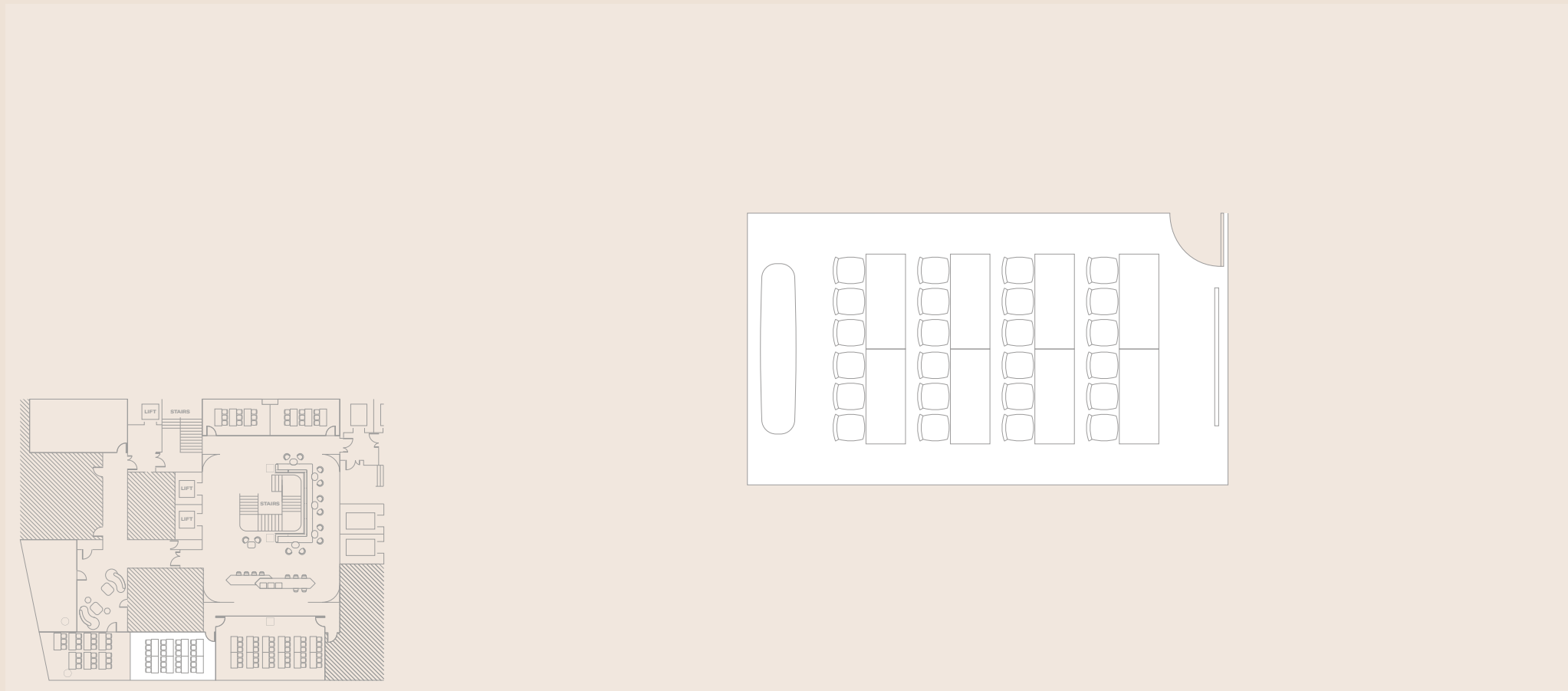


ROYAL ACADEMY OF ARTS

12 tables
36 capacity at 3 guests per table

For more room layouts tailored to your event,
please email events@thelondoner.com

CLASSROOM

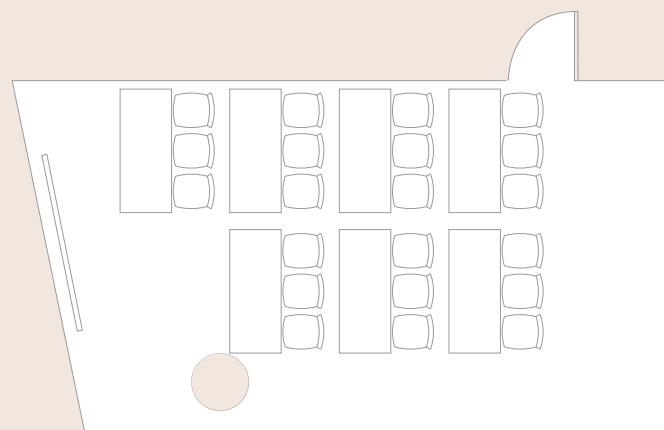
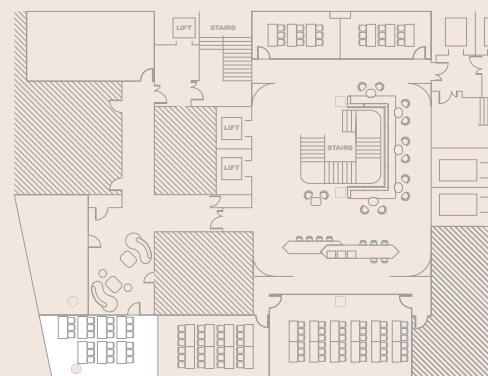


TATE BRITAIN

8 tables
24 capacity at 3 guests per table

For more room layouts tailored to your event,
please email events@thelondoner.com

CLASSROOM

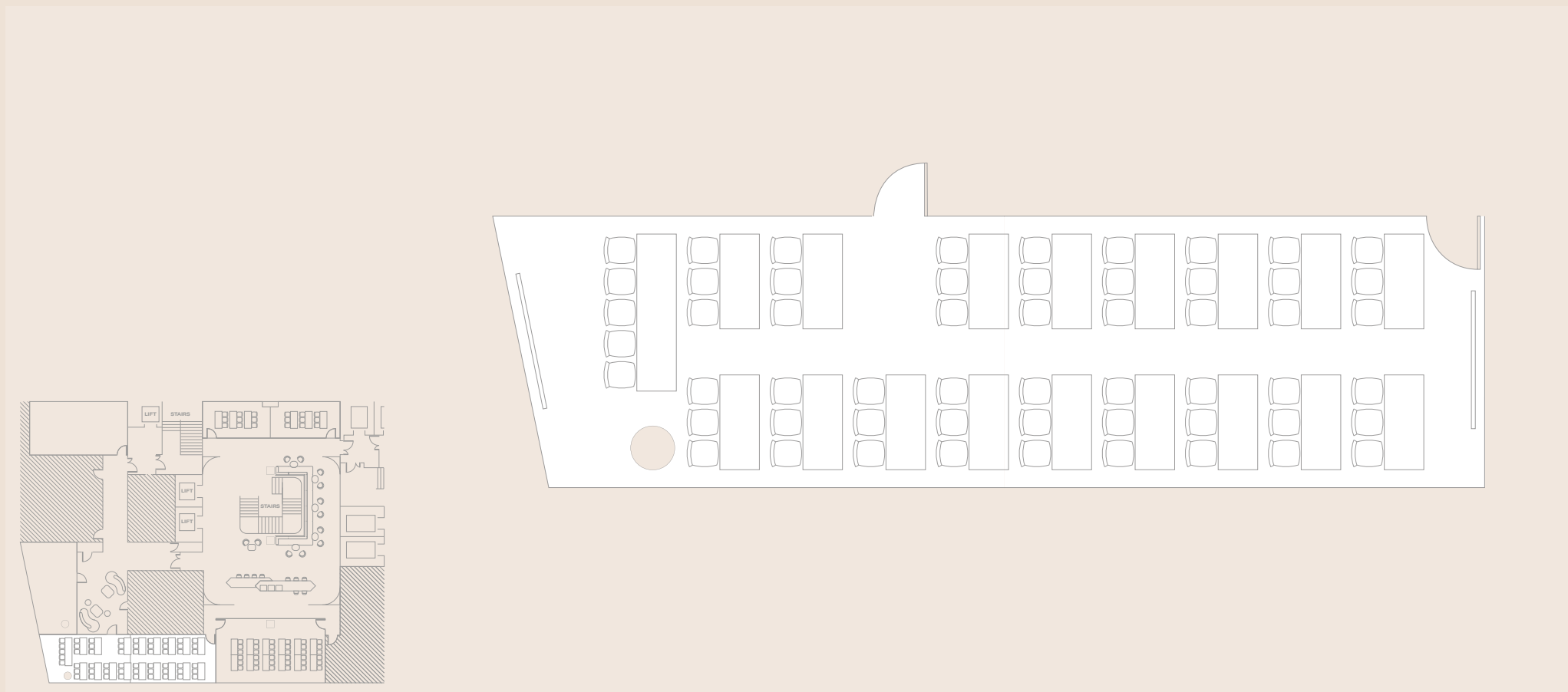


HAYWARD GALLERY

7 tables
21 capacity at 3 guests per table

For more room layouts tailored to your event,
please email events@thelondoner.com

CLASSROOM

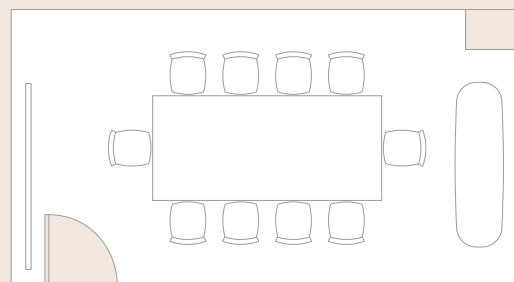
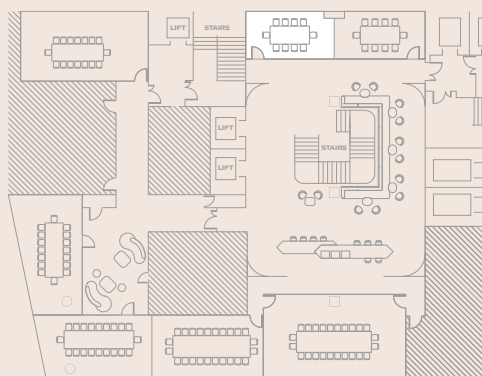


**TATE BRITAIN AND
HAYWARD GALLERY**

17 tables and 1 long table
56 capacity at 3 guests per table
5 guests per long table

For more room layouts tailored to your event,
please email events@thelondoner.com

BOARDROOM

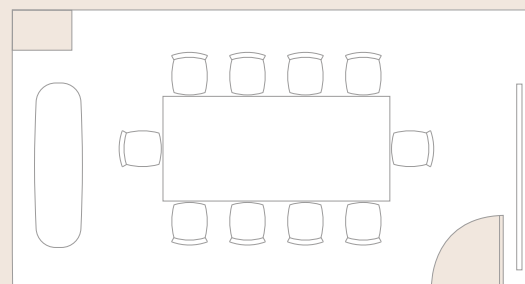
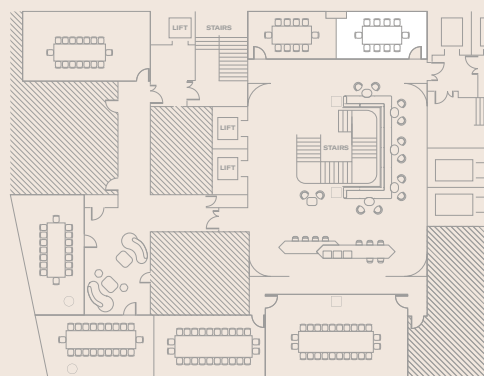


THE NATIONAL GALLERY

1 table
8 capacity

For more room layouts tailored to your event,
please email events@thelondoner.com

BOARDROOM

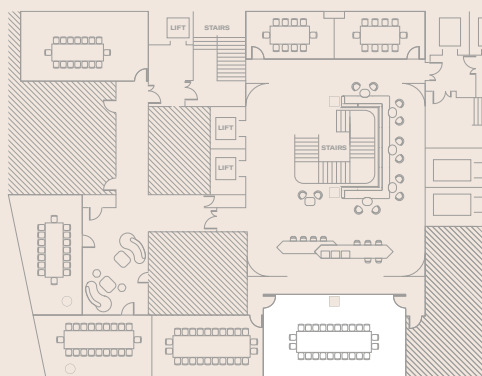
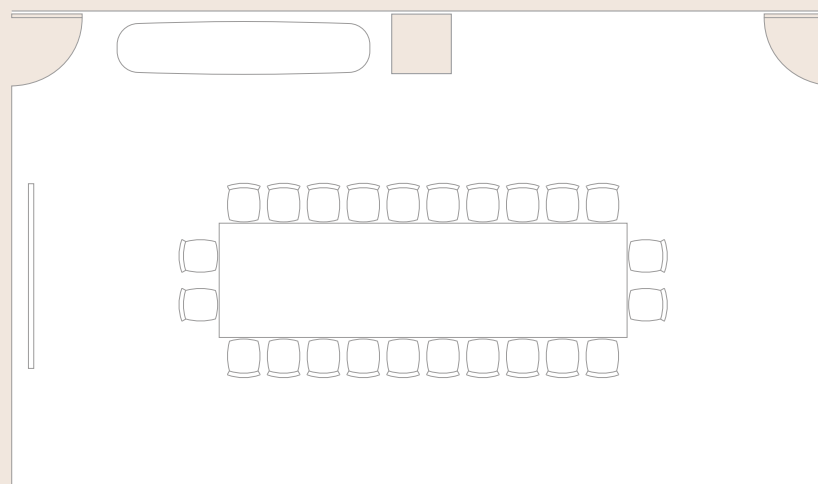


THE NATIONAL GALLERY

1 table
8 capacity

For more room layouts tailored to your event,
please email events@thelondoner.com

BOARDROOM

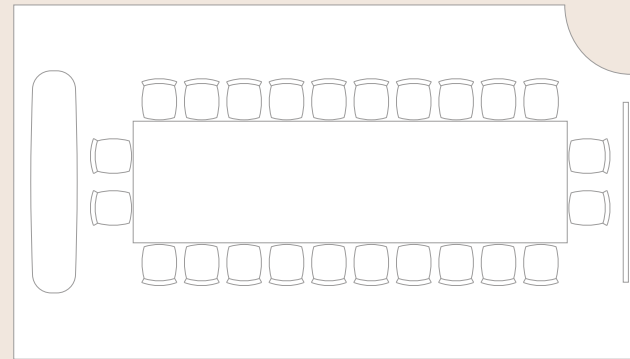
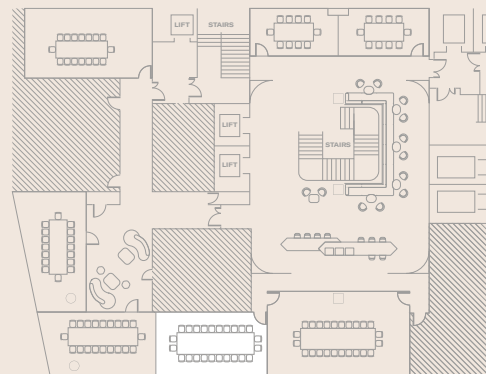


ROYAL ACADEMY OF ARTS

1 table
24 capacity

For more room layouts tailored to your event,
please email events@thelondoner.com

BOARDROOM

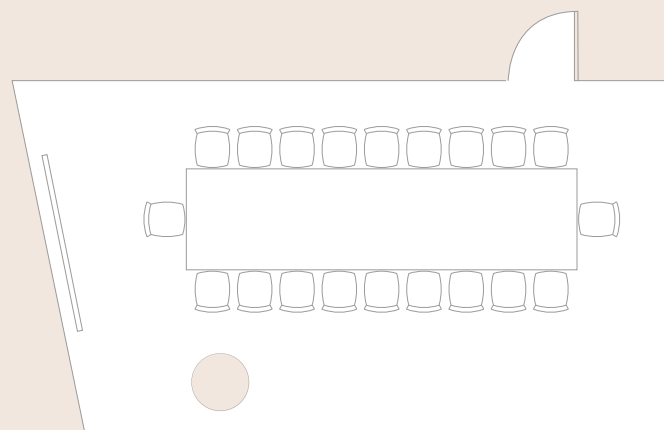
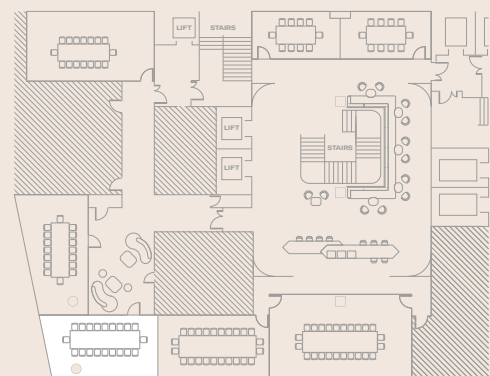


TATE BRITAIN

1 table
24 capacity

For more room layouts tailored to your event,
please email events@thelondoner.com

BOARDROOM

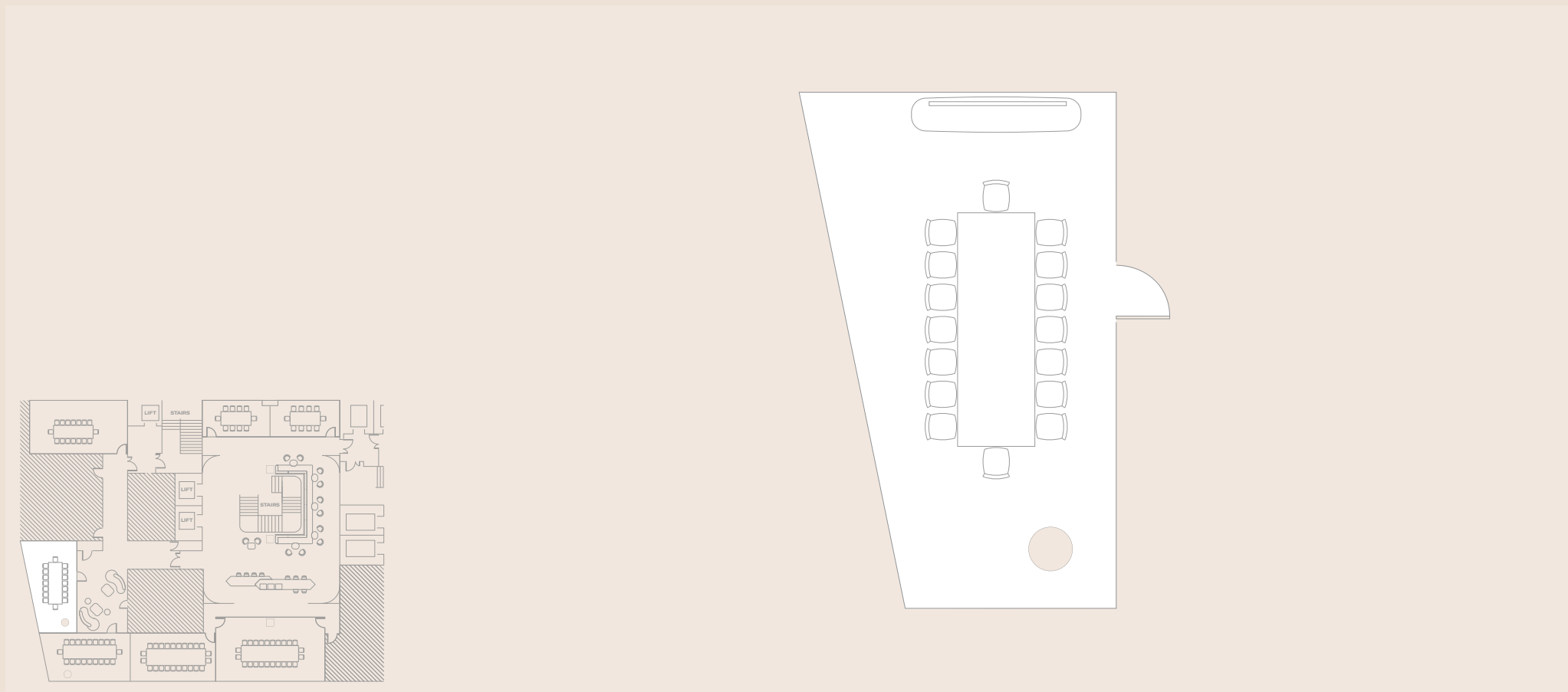


HAYWARD GALLERY

1 table
20 capacity

For more room layouts tailored to your event,
please email events@thelondoner.com

BOARDROOM

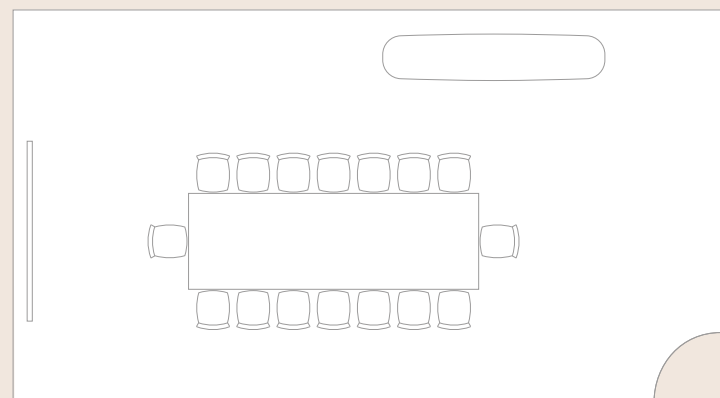
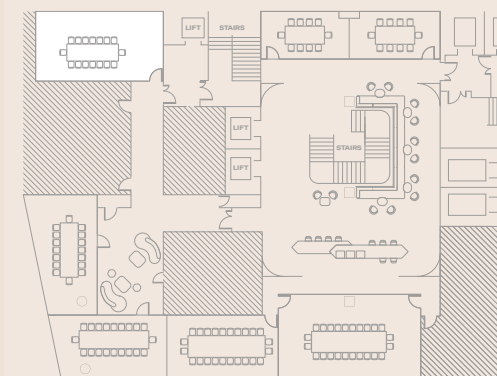


SERPENTINE GALLERY

1 table
16 capacity

For more room layouts tailored to your event,
please email events@thelondoner.com

BOARDROOM

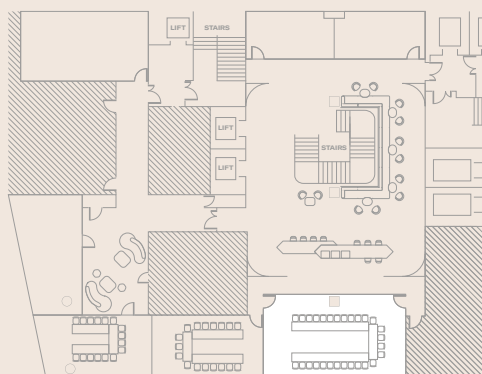
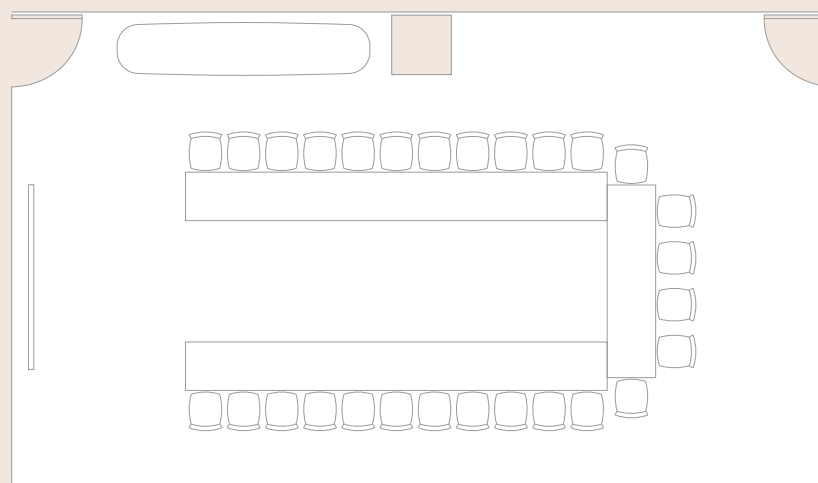


MADDOX GALLERY

1 table
16 capacity

For more room layouts tailored to your event,
please email events@thelondoner.com

U-SHAPE

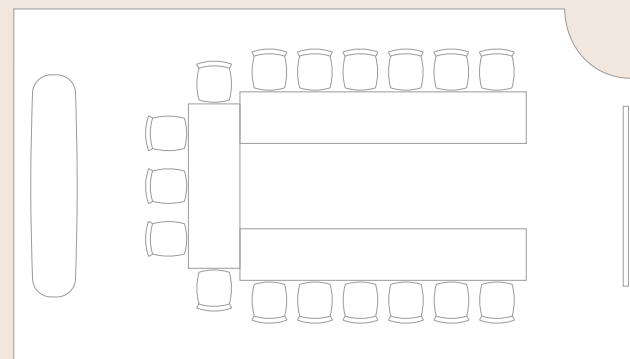
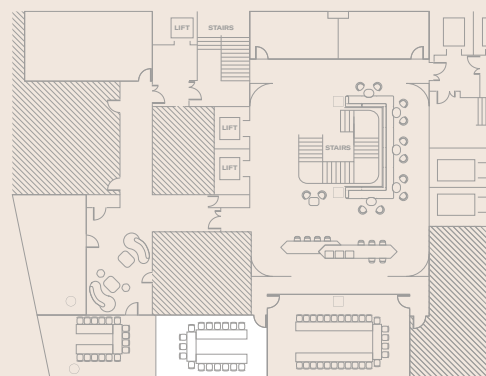


ROYAL ACADEMY OF ARTS

2 long tables 1 table
28 capacity at 6 guests per table
11 guests per long tables

For more room layouts tailored to your event,
please email events@thelondoner.com

U-SHAPE

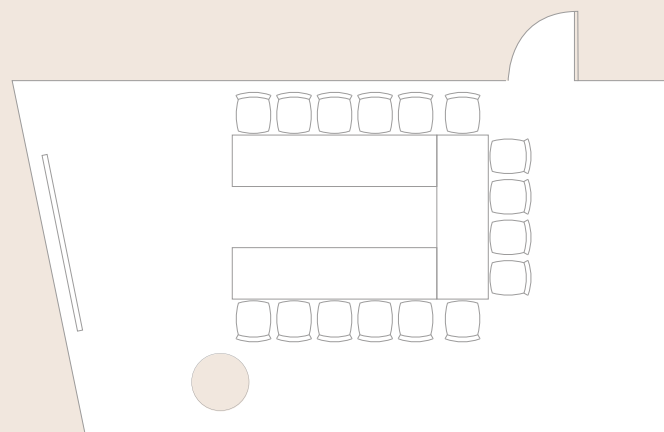
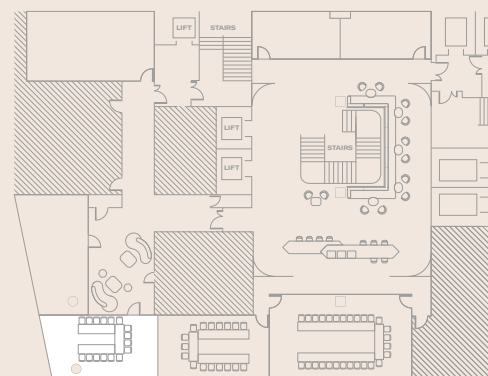


TATE BRITAIN

2 long tables 1 table
17 capacity at 5 guests per table
6 guests per long tables

For more room layouts tailored to your event,
please email events@thelondoner.com

U-SHAPE

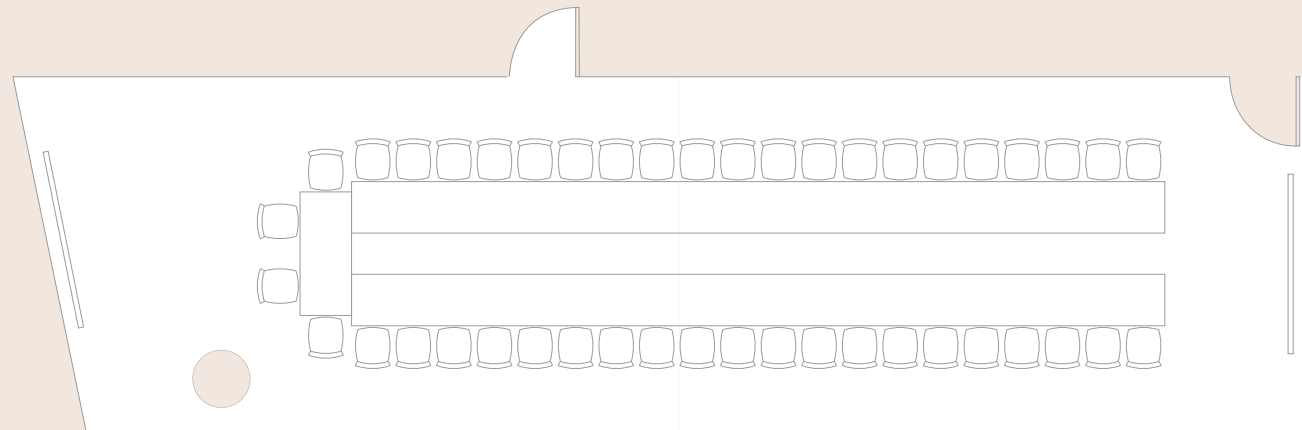
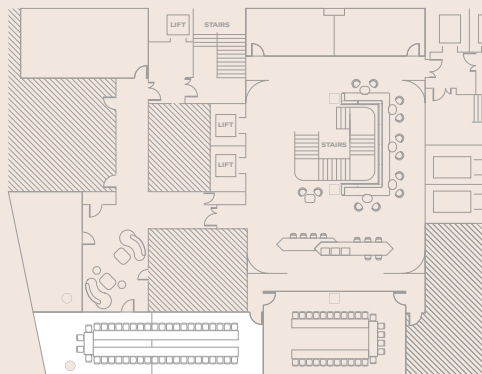


HAYWARD GALLERY

3 tables
16 capacity at 5-6 guests per table

For more room layouts tailored to your event,
please email events@thelondoner.com

U-SHAPE

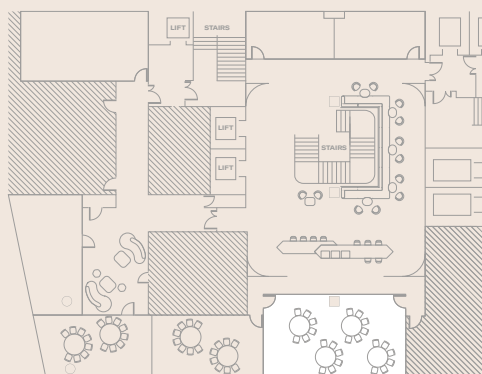
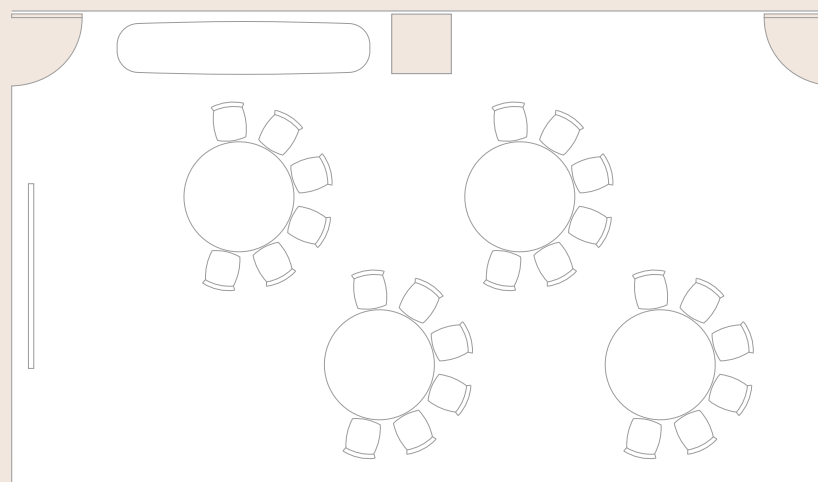


**TATE BRITAIN AND
HAYWARD GALLERY**

2 long tables 1 table
44 capacity at 4 guests per table
20 guests per long tables

For more room layouts tailored to your event,
please email events@thelondoner.com

CABARET

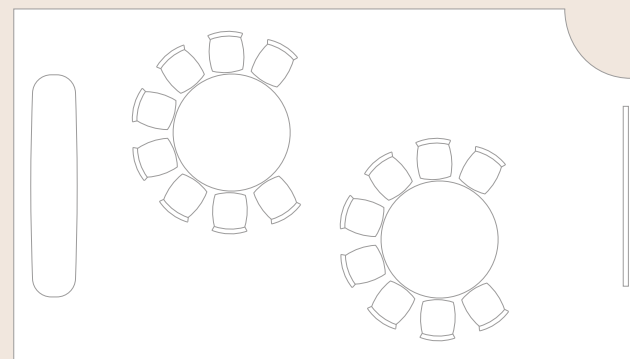
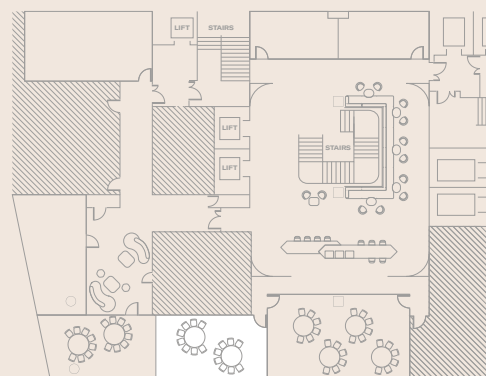


ROYAL ACADEMY OF ARTS

4 round tables
24 capacity at 6 guests per table

For more room layouts tailored to your event,
please email events@thelondoner.com

CABARET

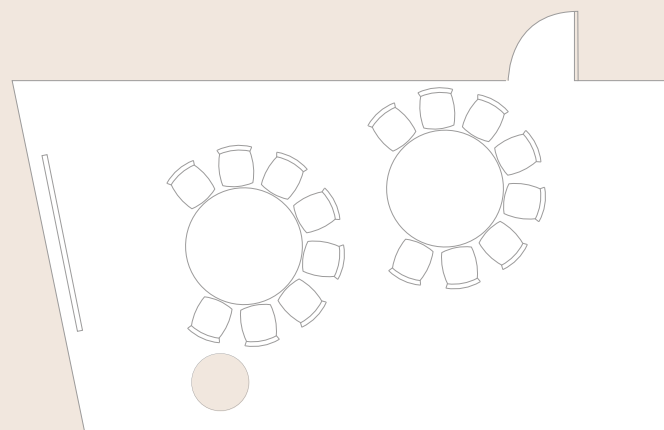
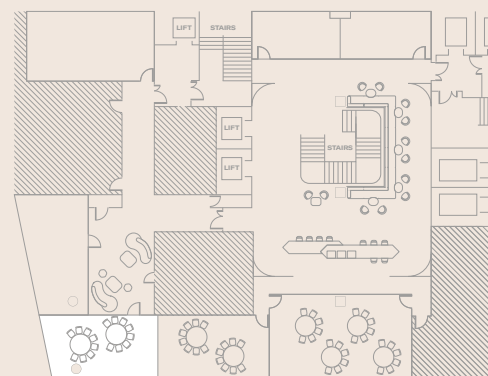


TATE BRITAIN

2 round tables
16 capacity at 8 guests per table

For more room layouts tailored to your event,
please email events@thelondoner.com

CABARET

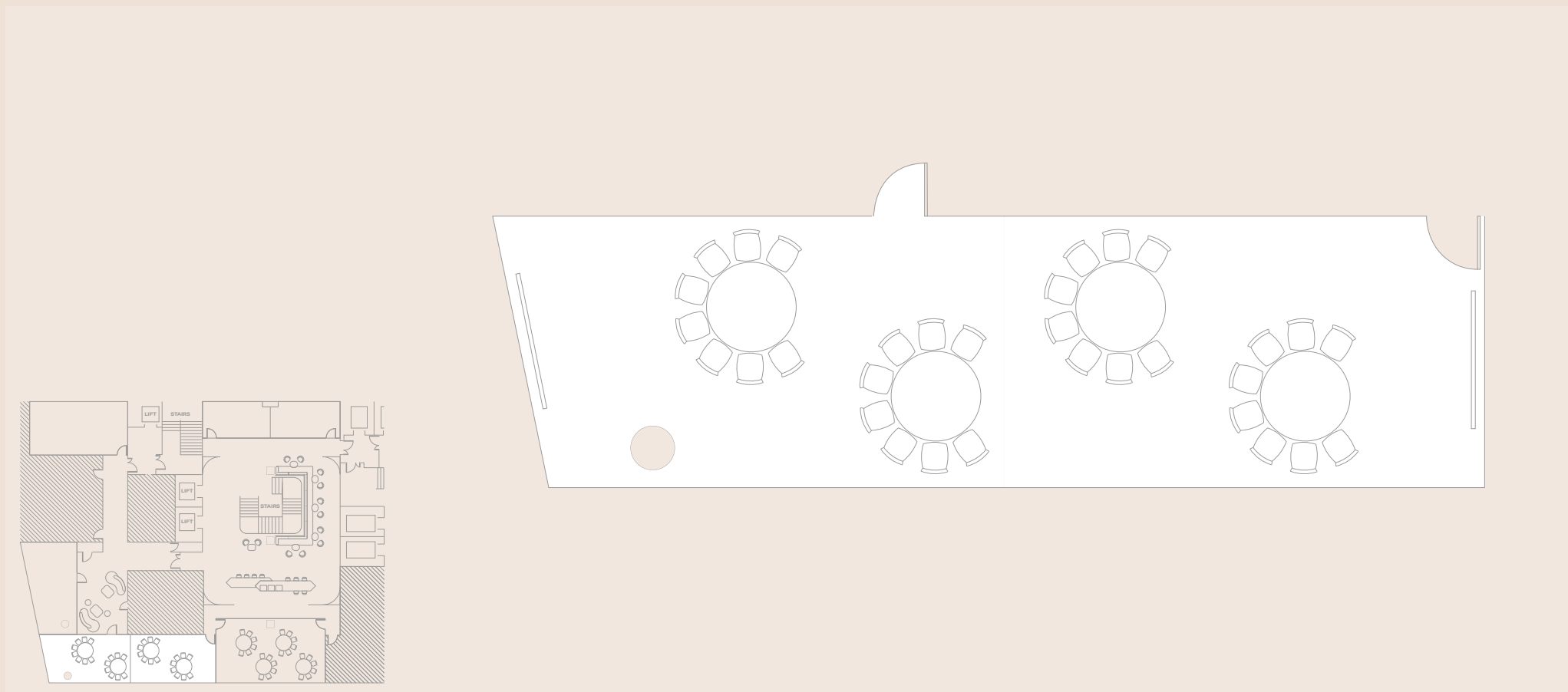


HAYWARD GALLERY

2 round tables
16 capacity at 8 guests per table

For more room layouts tailored to your event,
please email events@thelondoner.com

CABARET

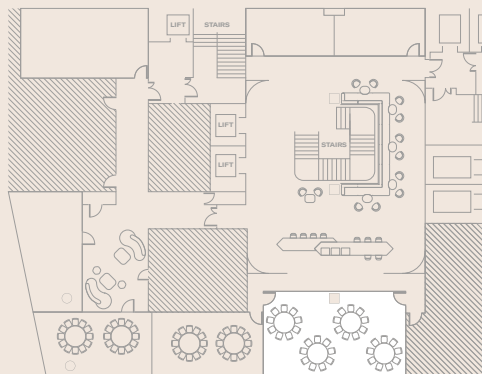
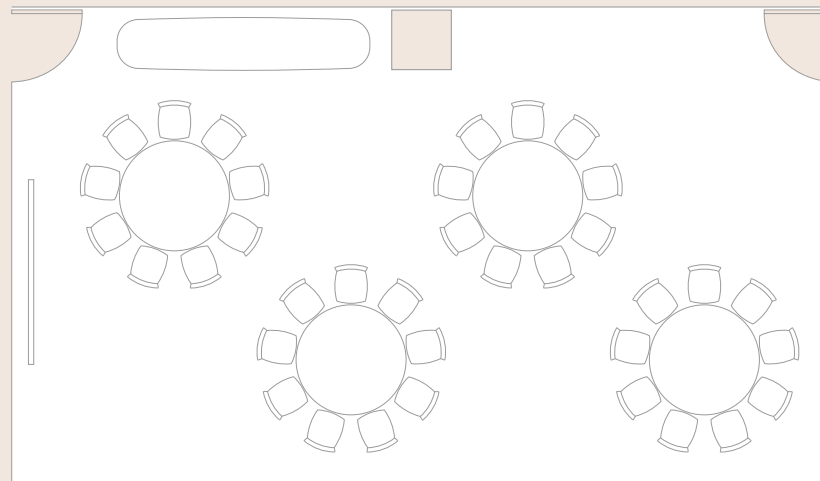


**TATE BRITAIN AND
HAYWARD GALLERY**

4 round tables
32 capacity at 8 guests per table

For more room layouts tailored to your event,
please email events@thelondoner.com

DINNER

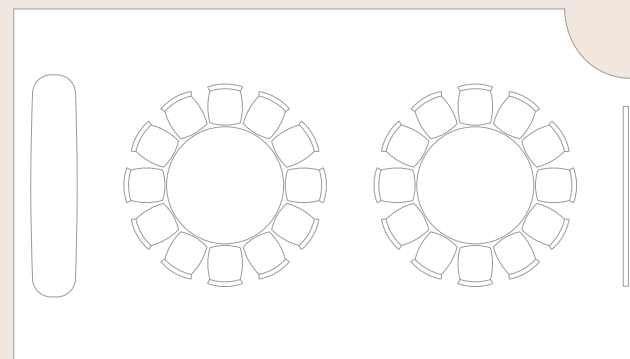
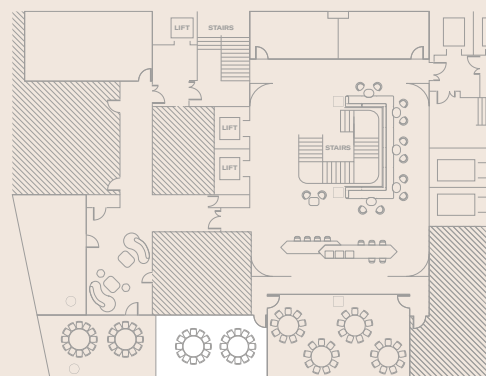


ROYAL ACADEMY OF ARTS

4 round tables
36 capacity at 9 guests per table

For more room layouts tailored to your event,
please email events@thelondoner.com

DINNER

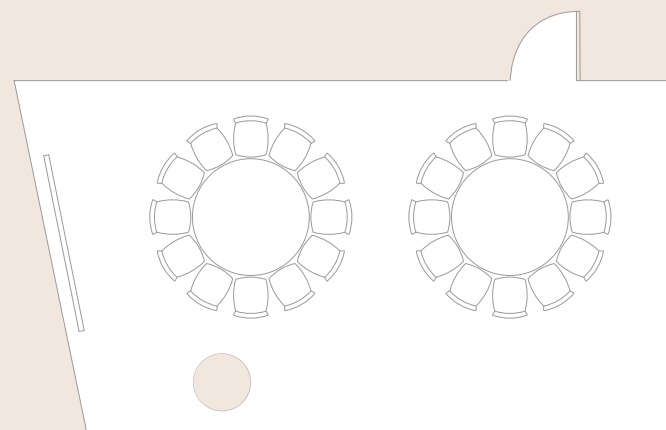
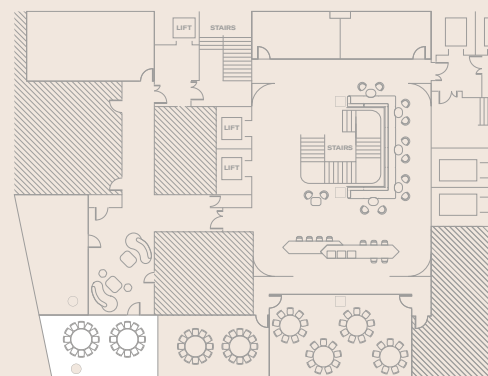


TATE BRITAIN

2 round tables
24 capacity at 12 guests per table

For more room layouts tailored to your event,
please email events@thelondoner.com

DINNER

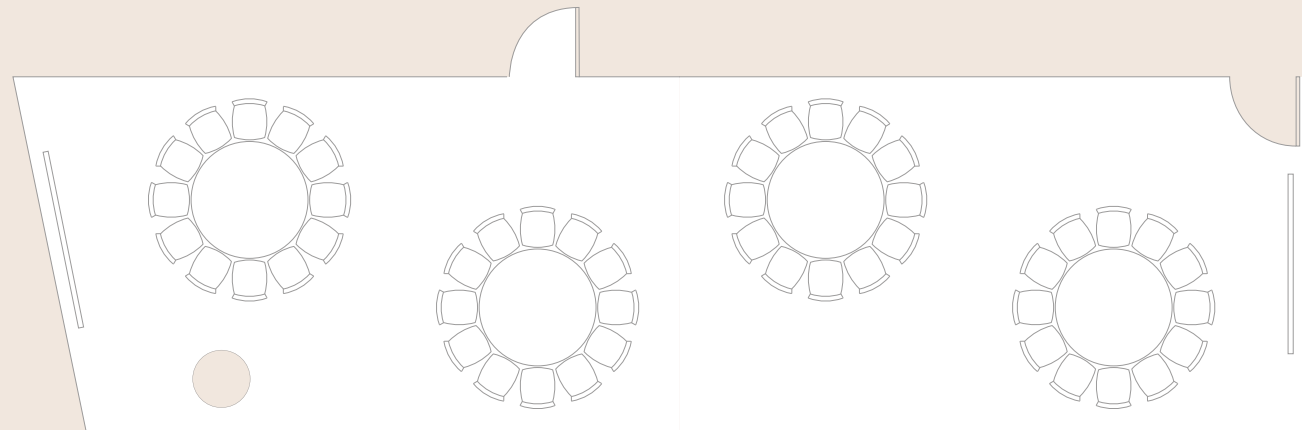
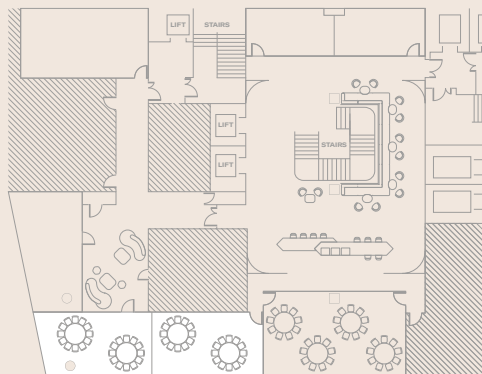


HAYWARD GALLERY

2 round tables
24 capacity at 12 guests per table

For more room layouts tailored to your event,
please email events@thelondoner.com

DINNER



**TATE BRITAIN AND
HAYWARD GALLERY**

4 round tables
48 capacity at 12 guests per table

For more room layouts tailored to your event,
please email events@thelondoner.com



THE LONDONER

LEICESTER SQ.

38 Leicester Square
London WC2H 7DX
+44 (0)20 7451 0101
thelondoner.com